

**UNOFFICIAL
DRAFT**

Vaughn Well Protection Zones



 East Petersburg Boundary

Well Protection Zones

Zone Number

-  1
-  2
-  3

0 1,000 2,000 Feet



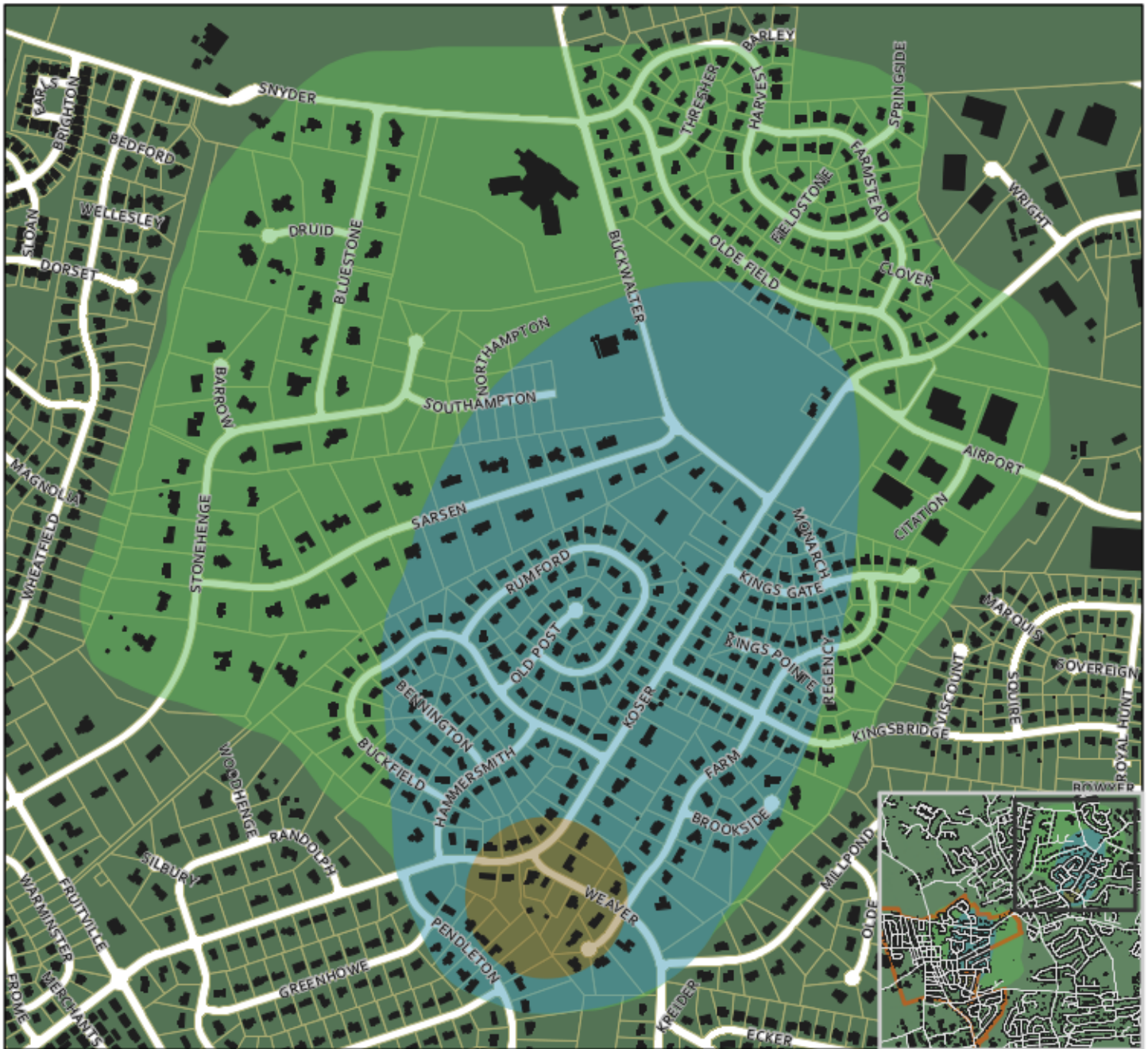
Well Protection Zones digitized from 'Wellhead Protection Program' document, Acer Engineers & Consultants, May 1996, for East Petersburg Borough Authority

Parcel boundaries: Lancaster County GIS Dept, 4th Qtr 2019
Building footprints: Lancaster County GIS Dept. Jan 2018

Map: Dave Magill Jan 2020

**UNOFFICIAL
DRAFT**

Koser Rd Spring Protection Zones



 East Petersburg Boundary

Well Protection Zones

Zone Number

-  1
-  2
-  3

0 1,000 2,000 Feet



Well Protection Zones digitized from 'Wellhead Protection Program' document, Acer Engineers & Consultants, May 1996, for East Petersburg Borough Authority

Parcel boundaries: Lancaster County GIS Dept, 4th Qtr 2019
Building footprints: Lancaster County GIS Dept. Jan 2018

Map: Dave Magill Jan 2020